

While the delivery of health services is our core business, we will also be focused on delivering a number of key priorities to help improve the health and wellbeing of our Tasmanian community by:



Continuing to respond to the COVID-19 Pandemic



Improving Access and Patient Flow across our Health System



Delivering care in clinically recommended times



Reforming the delivery of care in our Community



Prioritising Mental Health and Wellbeing

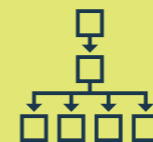


Building the Infrastructure for our Health Future

To support delivery of our strategic priorities we must have strong internal foundations.



Build and develop a sustainable and positive workforce we need now and for the future



Strengthen our governance, risk and financial management, performance and accountability



Strengthen Clinical Safety, Quality and Regulatory oversight